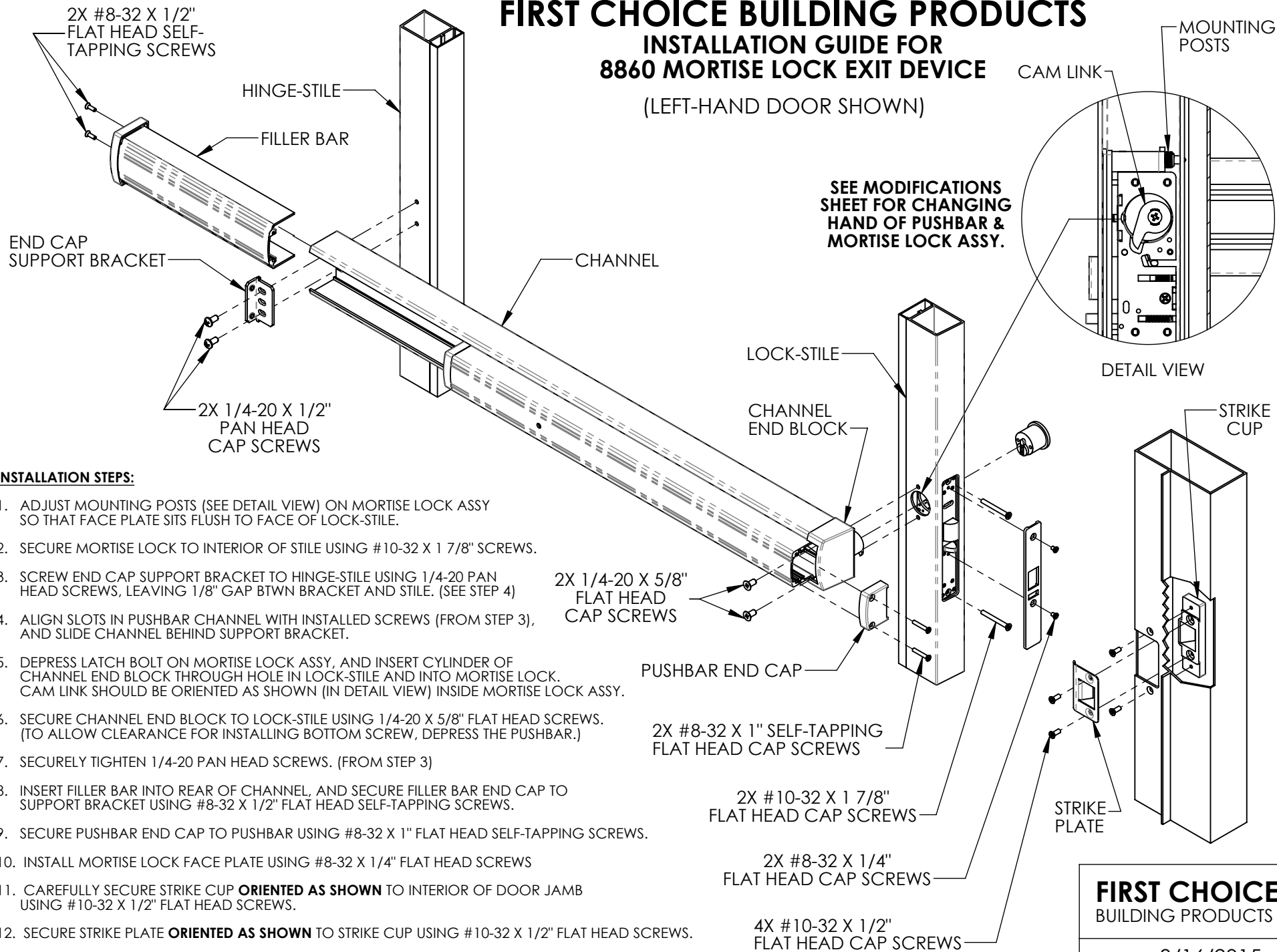


# FIRST CHOICE BUILDING PRODUCTS

## INSTALLATION GUIDE FOR 8860 MORTISE LOCK EXIT DEVICE

(LEFT-HAND DOOR SHOWN)



### INSTALLATION STEPS:

1. ADJUST MOUNTING POSTS (SEE DETAIL VIEW) ON MORTISE LOCK ASSY SO THAT FACE PLATE SITS FLUSH TO FACE OF LOCK-STILE.
2. SECURE MORTISE LOCK TO INTERIOR OF STILE USING #10-32 X 1 7/8" SCREWS.
3. SCREW END CAP SUPPORT BRACKET TO HINGE-STILE USING 1/4-20 PAN HEAD SCREWS, LEAVING 1/8" GAP BTWN BRACKET AND STILE. (SEE STEP 4)
4. ALIGN SLOTS IN PUSHBAR CHANNEL WITH INSTALLED SCREWS (FROM STEP 3), AND SLIDE CHANNEL BEHIND SUPPORT BRACKET.
5. DEPRESS LATCH BOLT ON MORTISE LOCK ASSY, AND INSERT CYLINDER OF CHANNEL END BLOCK THROUGH HOLE IN LOCK-STILE AND INTO MORTISE LOCK. CAM LINK SHOULD BE ORIENTED AS SHOWN (IN DETAIL VIEW) INSIDE MORTISE LOCK ASSY.
6. SECURE CHANNEL END BLOCK TO LOCK-STILE USING 1/4-20 X 5/8" FLAT HEAD SCREWS. (TO ALLOW CLEARANCE FOR INSTALLING BOTTOM SCREW, DEPRESS THE PUSHBAR.)
7. SECURELY TIGHTEN 1/4-20 PAN HEAD SCREWS. (FROM STEP 3)
8. INSERT FILLER BAR INTO REAR OF CHANNEL, AND SECURE FILLER BAR END CAP TO SUPPORT BRACKET USING #8-32 X 1/2" FLAT HEAD SELF-TAPPING SCREWS.
9. SECURE PUSHBAR END CAP TO PUSHBAR USING #8-32 X 1" FLAT HEAD SELF-TAPPING SCREWS.
10. INSTALL MORTISE LOCK FACE PLATE USING #8-32 X 1/4" FLAT HEAD SCREWS
11. CAREFULLY SECURE STRIKE CUP **ORIENTED AS SHOWN** TO INTERIOR OF DOOR JAMB USING #10-32 X 1/2" FLAT HEAD SCREWS.
12. SECURE STRIKE PLATE **ORIENTED AS SHOWN** TO STRIKE CUP USING #10-32 X 1/2" FLAT HEAD SCREWS.

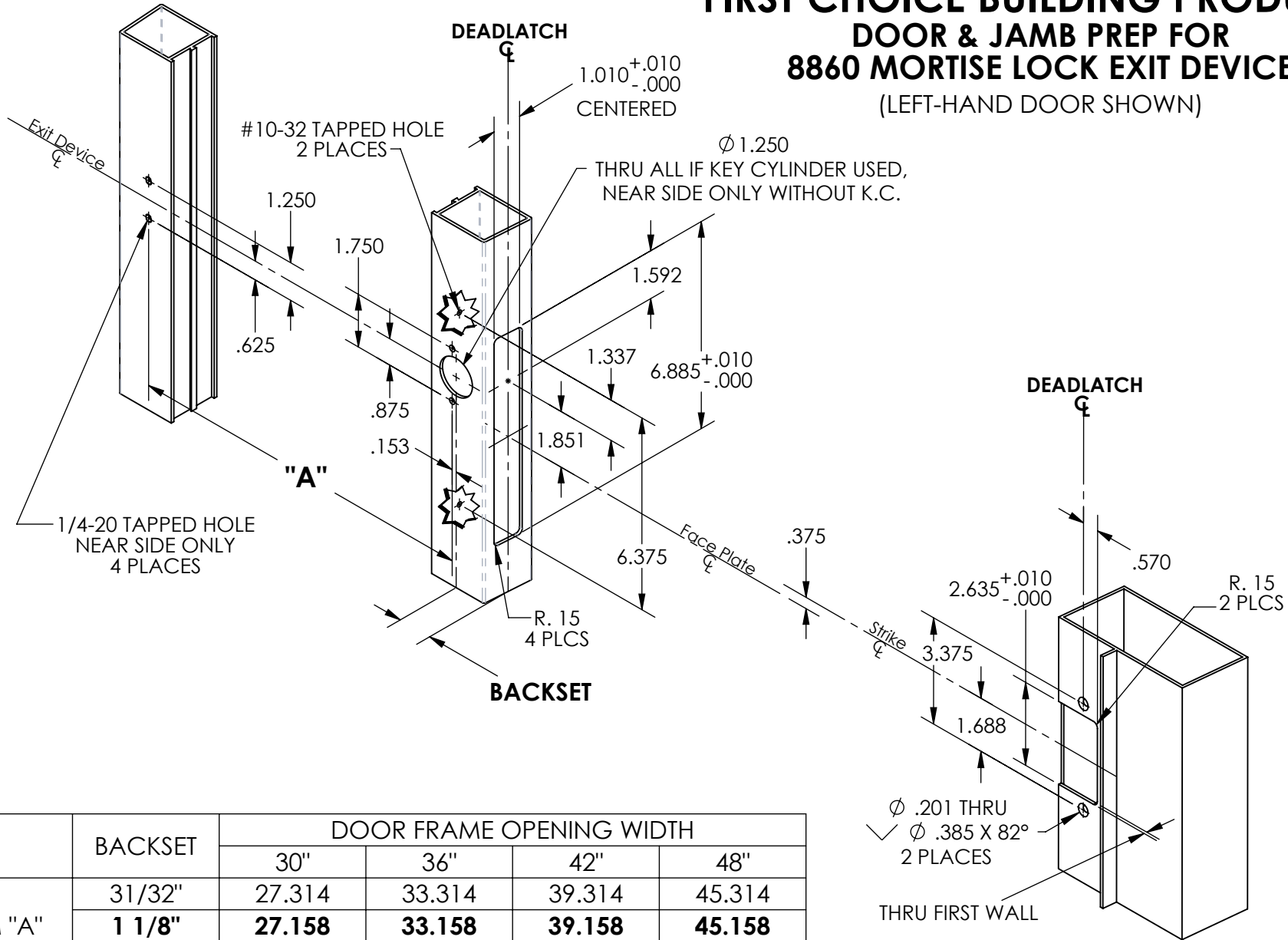
**FIRST CHOICE**  
BUILDING PRODUCTS

REVISED: 3/16/2015

# FIRST CHOICE BUILDING PRODUCTS

## DOOR & JAMB PREP FOR 8860 MORTISE LOCK EXIT DEVICE

(LEFT-HAND DOOR SHOWN)

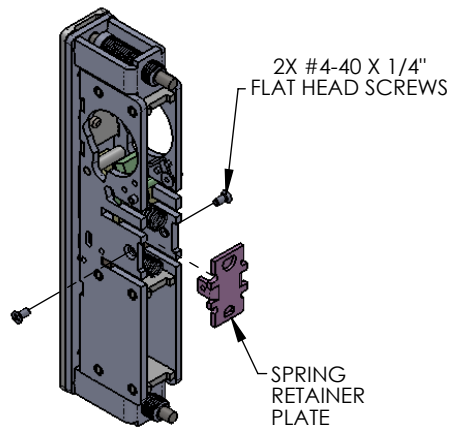


	BACKSET	DOOR FRAME OPENING WIDTH			
		30"	36"	42"	48"
DIM "A"	31/32"	27.314	33.314	39.314	45.314
	<b>1 1/8"</b>	<b>27.158</b>	<b>33.158</b>	<b>39.158</b>	<b>45.158</b>
	1 1/2"	26.783	32.783	38.783	44.783

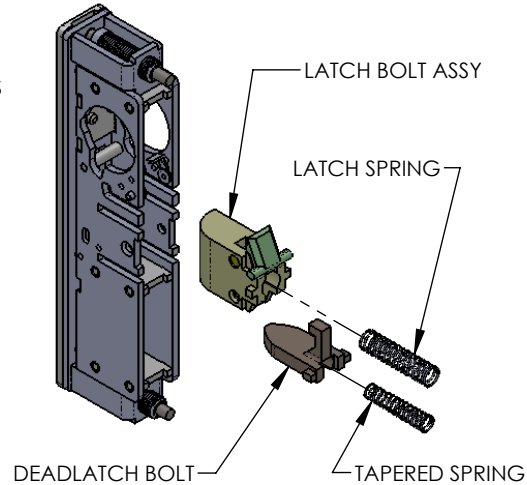
**FIRST CHOICE**  
BUILDING PRODUCTS

REVISED: 1/22/2015

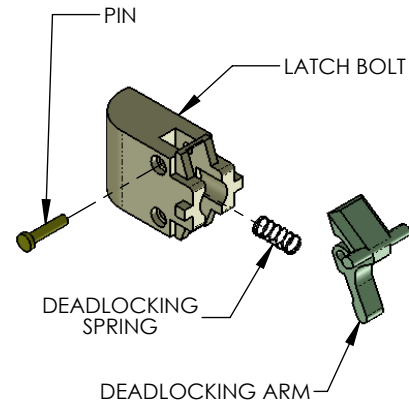
## TO CHANGE HANDING OF MORTISE LOCK ASSY



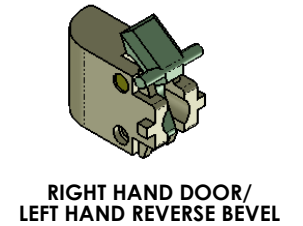
1. REMOVE 2X #4-40 X 1/4" FLAT HEAD SCREWS AND SPRING RETAINER PLATE.



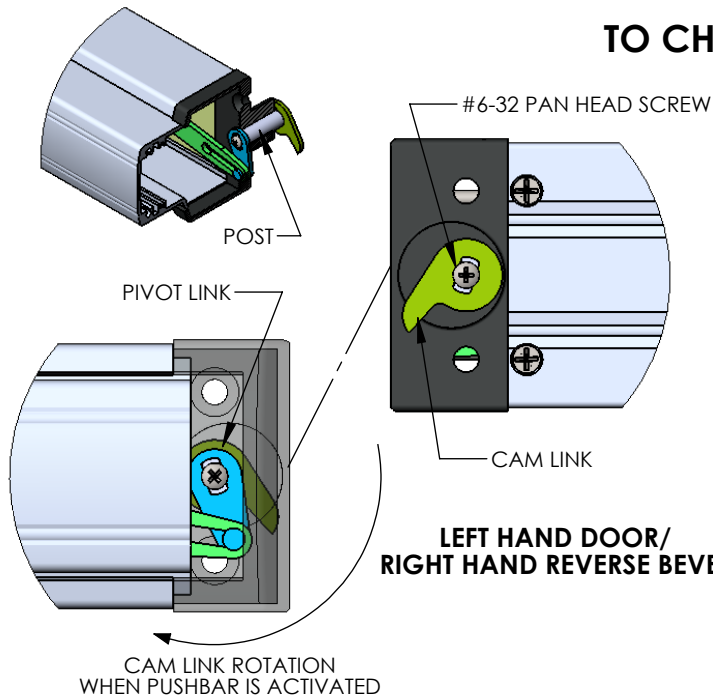
2. REMOVE 2 SPRINGS, DEADLATCH BOLT, AND LATCH BOLT ASSY FROM LOCK BODY.



3. REMOVE PIN FROM LATCH BOLT. TO DETERMINE HANDING OF ASSY, REFER TO PICTURES ON THE RIGHT.



## TO CHANGE HANDING OF PUSHBAR ASSY



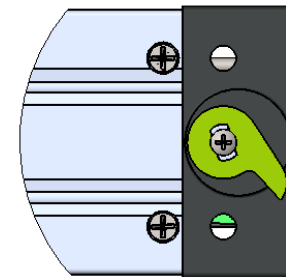
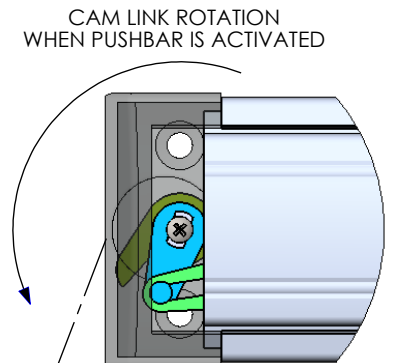
1. REMOVE 2X #8-32 X 1" FLAT HEAD SCREWS & PUSHBAR ENDCAP FROM PUSHBAR.

2. REMOVE #6-32 PAN HEAD SCREW SECURED TO CAM LINK, AND FLIP CAM LINK TO OPPOSITE FACE.

(REFER TO DIAGRAMS AND ORIENT CAM LINK ARM AS SHOWN.)

3. RE-SECURE CAM LINK TO POST. KEEP POST IN POSITION BY PUSHING FROM OPPOSITE END.

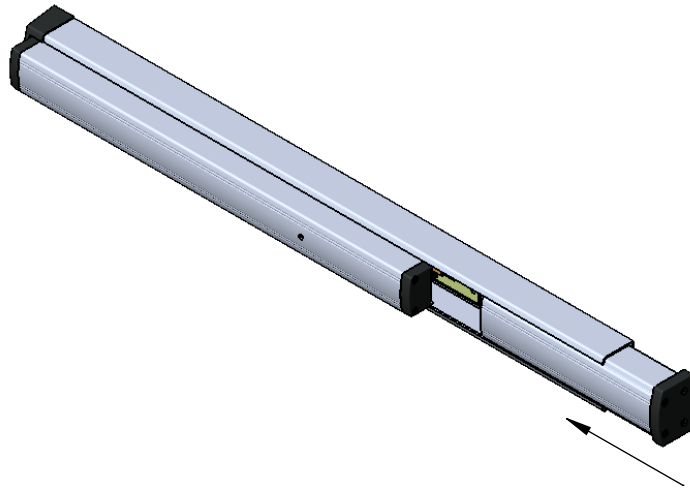
4. DEPRESS PUSHBAR AND ROTATE CAM LINK UNTIL POSITIONED CORRECTLY.



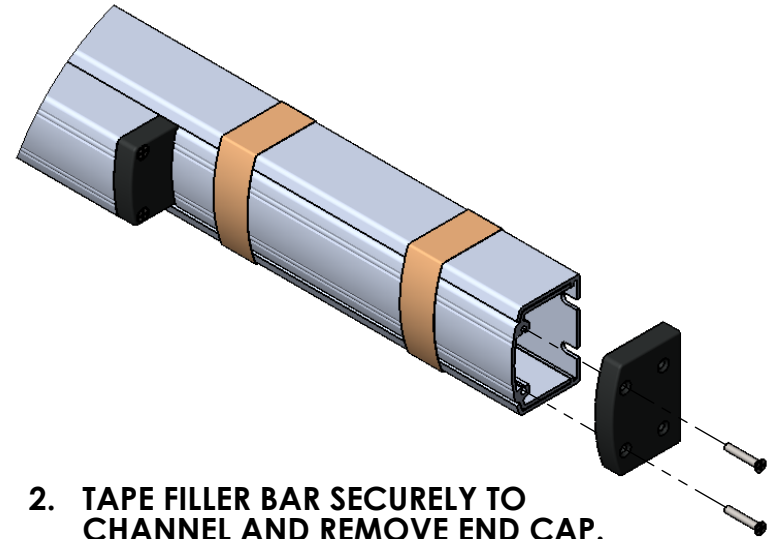
**FIRST CHOICE**  
BUILDING PRODUCTS

REVISED: 1/23/2015

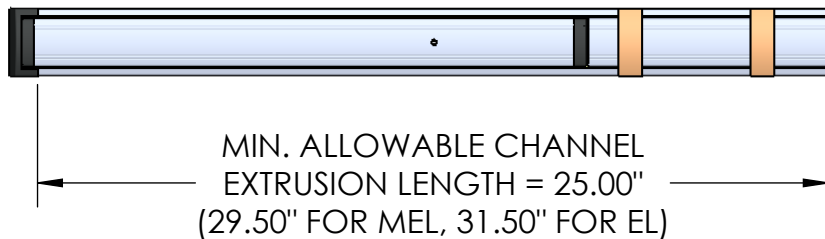
# 8660/8760/8860 EXIT DEVICE FIELD-SIZING INSTRUCTIONS



1. WITH END CAP SCREWED TO FILLER BAR, SLIDE BAR FULLY INTO CHANNEL.

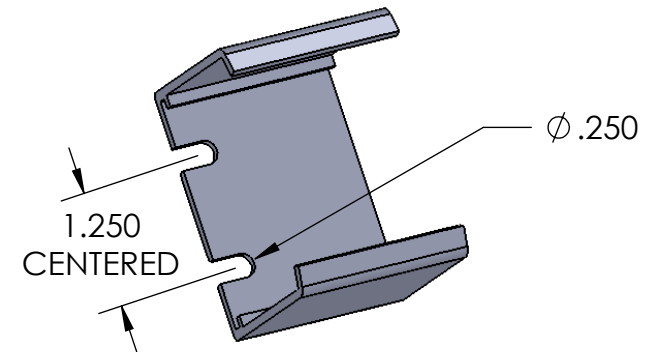


2. TAPE FILLER BAR SECURELY TO CHANNEL AND REMOVE END CAP.



MIN. ALLOWABLE CHANNEL  
EXTRUSION LENGTH = 25.00"  
(29.50" FOR MEL, 31.50" FOR EL)

3. MEASURE & MARK NEW LENGTH TO BE CUT.  
INSERT A PAPER TOWEL INSIDE FILLER BAR  
(AS A CHIP GUARD) AND MAKE DESIRED CUT.

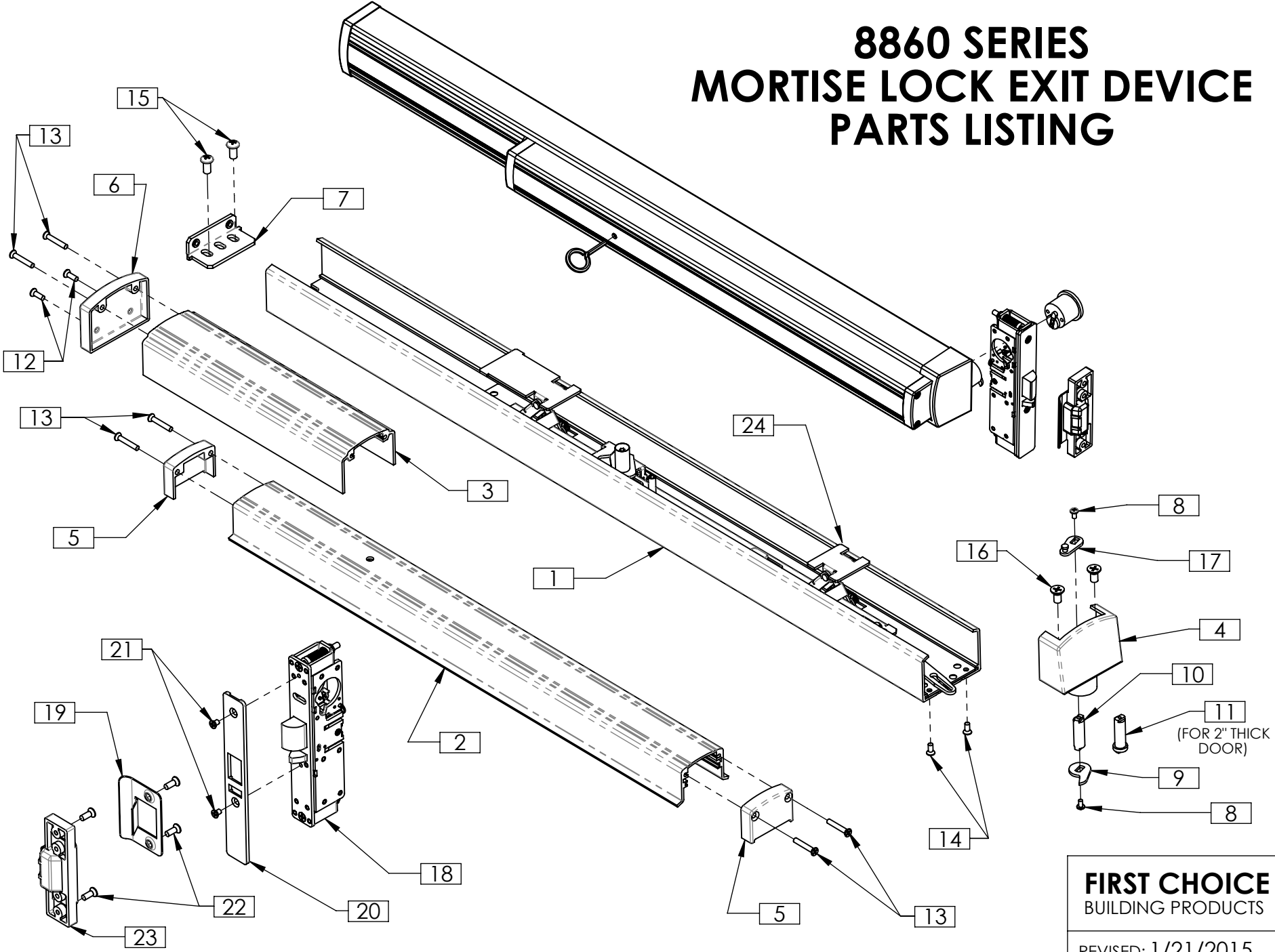


4. USE CHANNEL REMINANT TO RELOCATE 2X  
 $\phi .250$  MOUNTING HOLES IN THE CHANNEL.  
DRILL HOLES AND  
DEBURR ALL EDGES.

**FIRST CHOICE**  
BUILDING PRODUCTS

REVISED: 1/26/2015

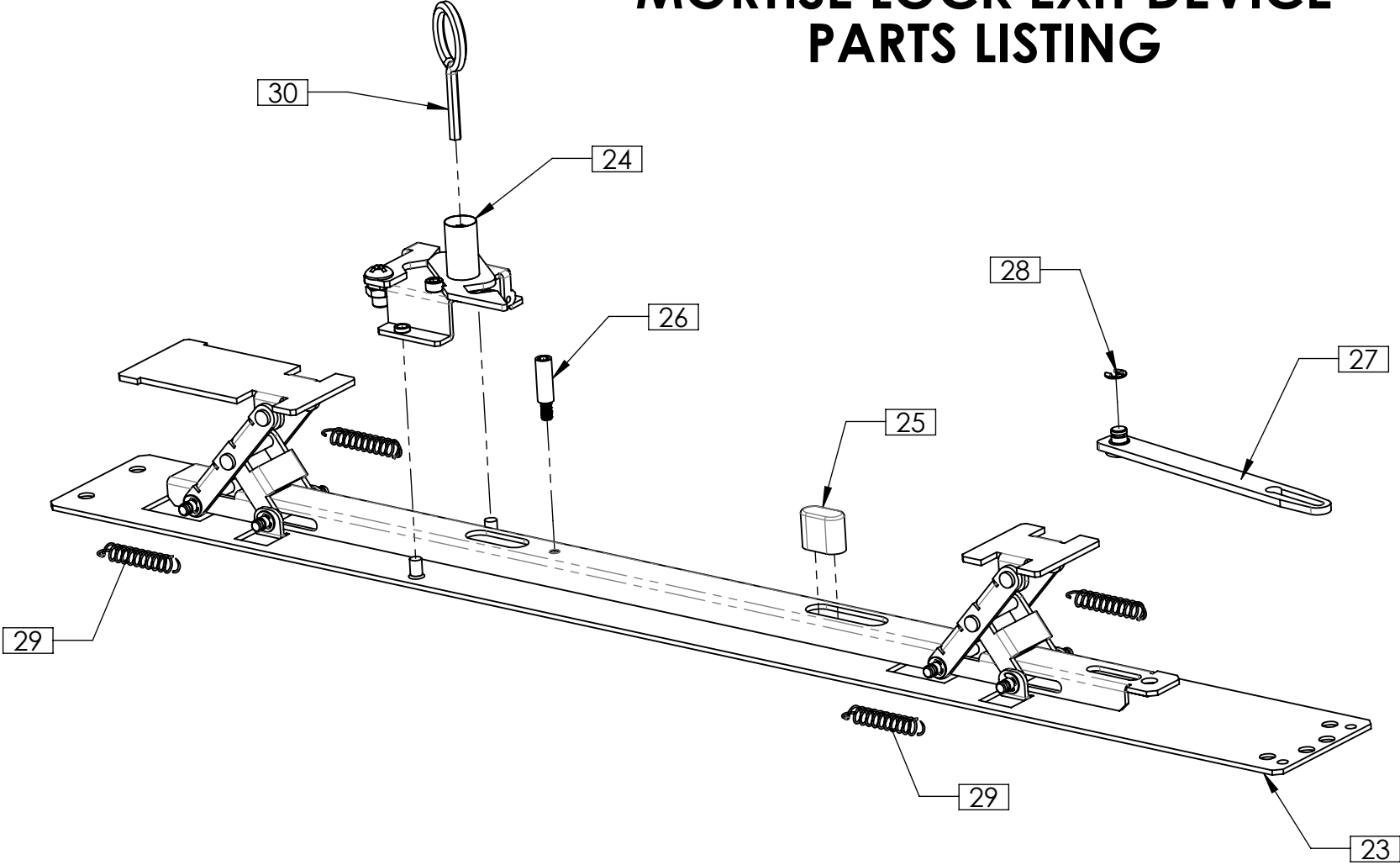
# 8860 SERIES MORTISE LOCK EXIT DEVICE PARTS LISTING



**FIRST CHOICE**  
BUILDING PRODUCTS

REVISED: 1/21/2015

# 8860 SERIES MORTISE LOCK EXIT DEVICE PARTS LISTING



**FIRST CHOICE**  
BUILDING PRODUCTS

REVISED: 1/21/2015